

Steps to integrate an Iocomp ActiveX control into Microsoft FrontPage

First, open the **Microsoft FrontPage** application. To open a blank page, click File Menu, select New Page or Web, then at the right side of your screen, go to the **New** options, and select Blank Page. [Note: If you already have an existing file, click the File menu, click Open, and choose your existing file.]

Go to the **Insert** menu, and select the **Web Component**. The Insert Web Component window will display as in Figure 1.

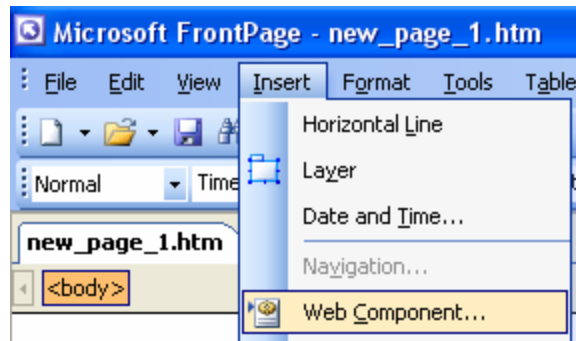


Figure 1

Next, in the "Component type" list-box, select/click "Advanced Controls". In the "Choose a control" list-box, select/click the "ActiveX Control" item. Either click the **Next** button, or double-click the **ActiveX Control** item to proceed to the next dialog as shown in Figure 2.

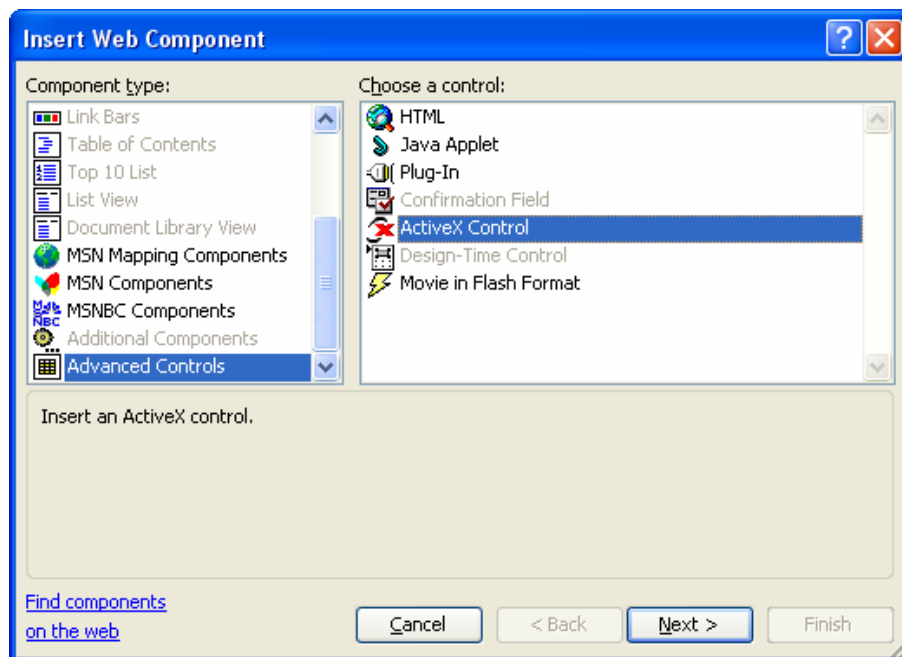


Figure 2

You can now choose the Iocomp control you wish to insert into your web-page. You can either double-click the control, or select it, and then click the **Finish** button. The control that you chose will now appear in your work space.

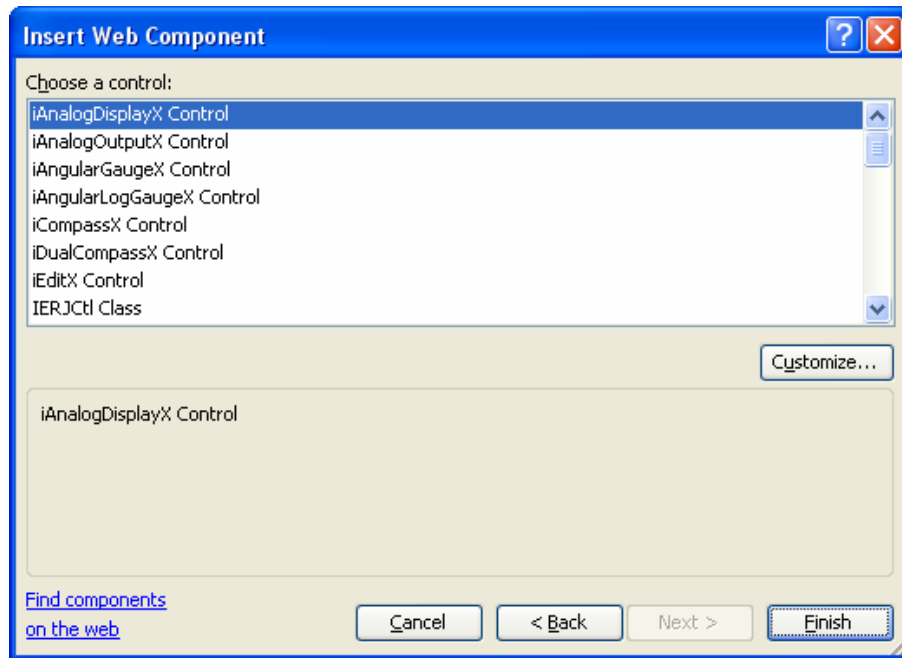


Figure 3

Note: If you cannot find the Iocomp ActiveX Controls in the Microsoft FrontPage "Insert Web Component" dialog, click the **Customize** button. The dialog shown in figure 4 will appear. Check the boxes for the Iocomp controls you wish to add.

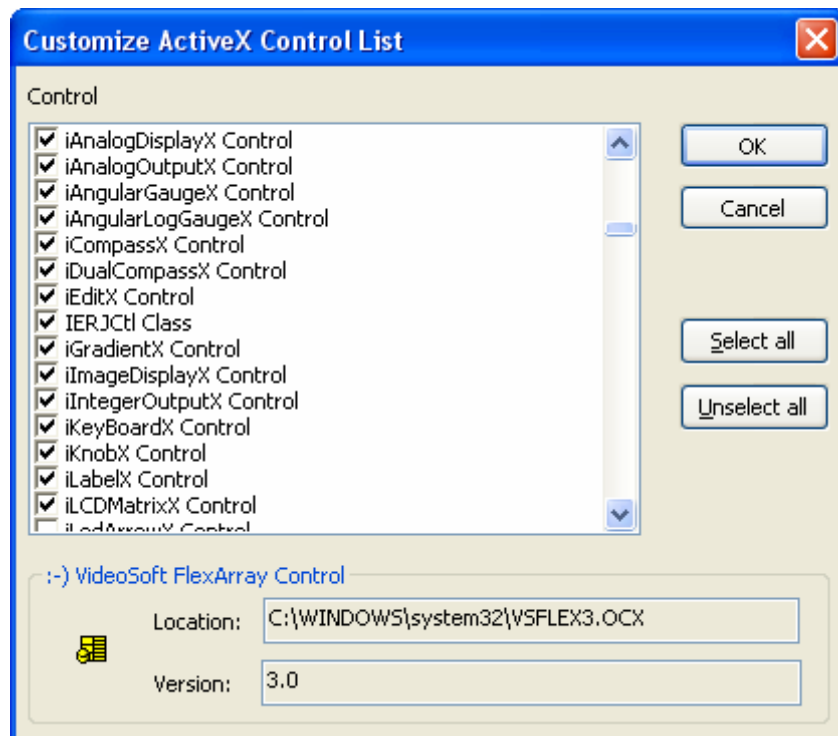


Figure 4

Based on Figure 3, the **iAnalogDisplayX1** control was selected. By clicking the **Finish** button, the **iAnalogDisplayX1** control will be displayed in the **Normal Page**. The height and width of the control can be adjusted directly.



Figure 5

If you want to make any changes to the properties of the iAnalogDisplayX1 control, simply right-click the control and select/click the **ActiveX Control Properties...** as shown in figure 6.

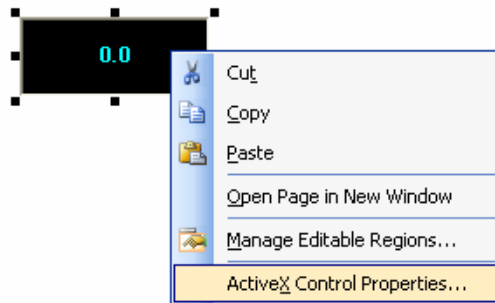


Figure 6

Figure 7 shows the Iocomp custom property editor for the iAnalogDisplayX control. Each Iocomp control type has its own custom designed property-editor which makes it easy to setup the control

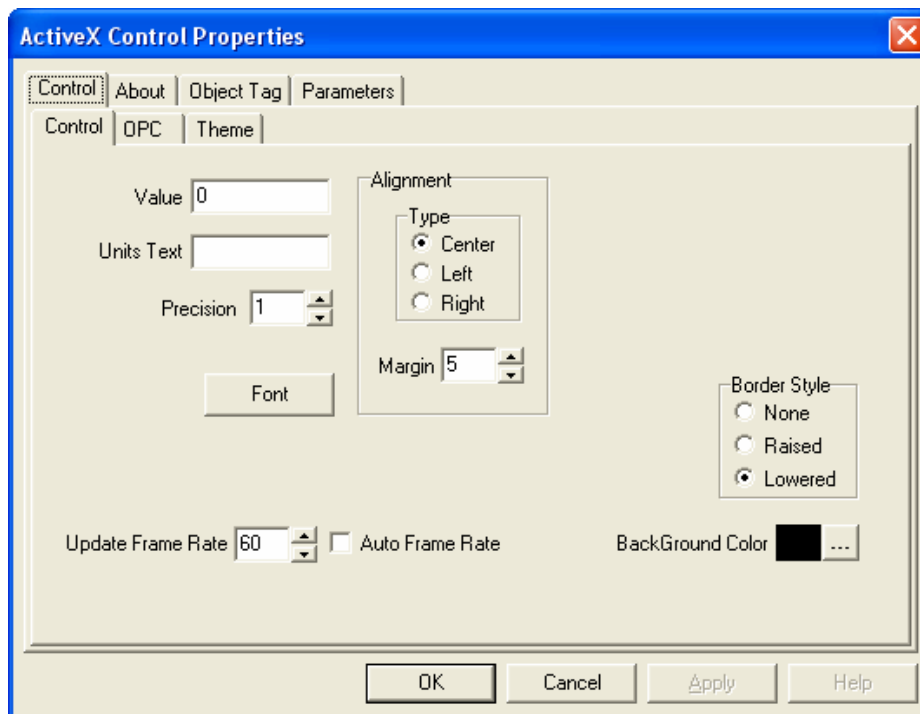


Figure 7

That's all! You can now add some scripting code to manage the control properties, methods and events at runtime. For more details please refer to our [VBScript Tutorial](#) or [JavaScript Tutorial](#).